

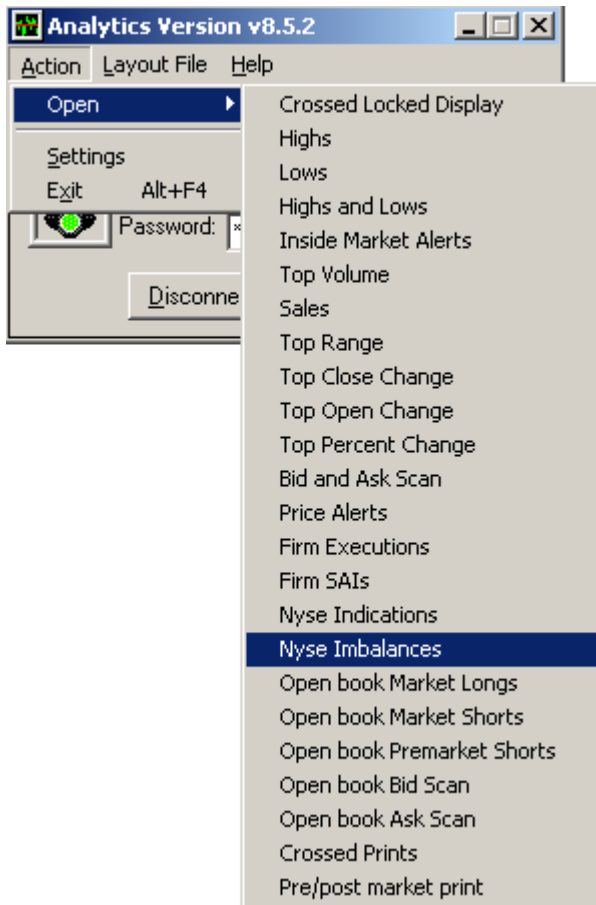
User's Manual for Imbalance

This manual is for the trader's who upgrades the analytic client from version 8.5.2 to the version 8.5.3 along with analytic server version 8.6.6 and driver version 8.5.5 in order to use the newly added "Regulatory Imbalance".

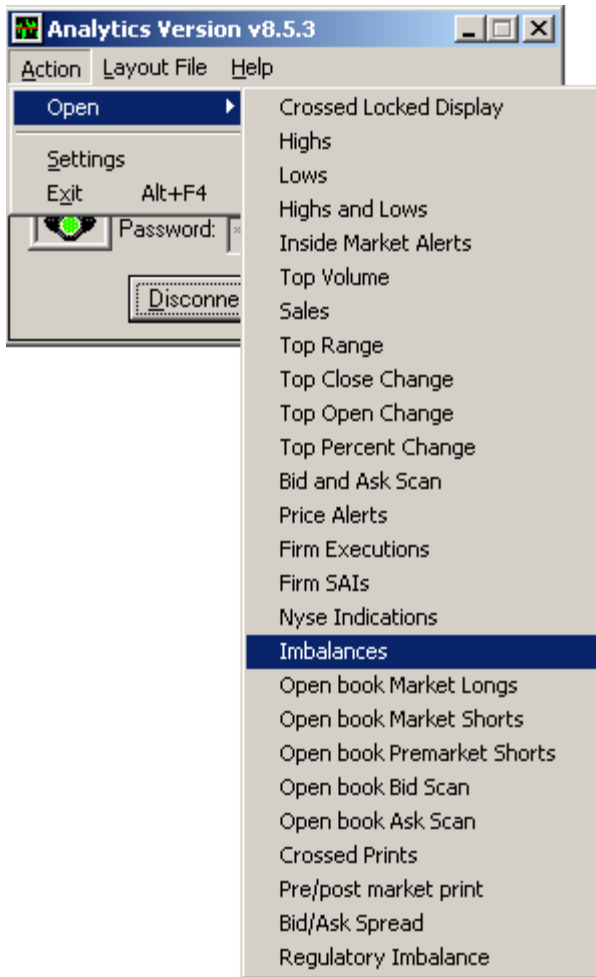
It describes the difference between the usages of GUI of earlier analytic client version 8.5.2 to new analytic client version 8.5.3 step by step.

Following are the difference between client version 8.5.2 to version 8.5.3 related to Imbalance.

In version 8.5.2 the main menu is like below screen shot, where the name of the menu is "Nyse Imbalances".



While in version 8.5.3 the main menu name is changed to “Imbalances”.



The window caption has been changed from “Nyse Imbalances” to “Imbalances”.

Pls. refer the snapshots.

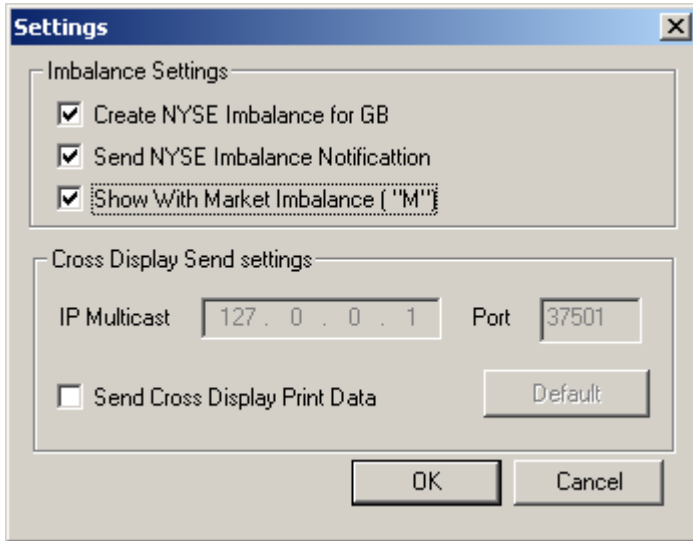
Version 8.5.2

Symbol	Volume	Status
KIM	969,600	M
NTT	6,000	M
CNO	168,700	M
ISH	700	M
LDK	83,000	M
TSL	47,700	M
TM	32,900	M
GF	11,800	M
DCS	7,100	M
ETE	5,300	M
GDL	800	M
PT	28,400	M
FIG	7,300	M
ICA	53,500	M
RVT	62,500	M
SSL	15,100	M
TNS	10,000	M

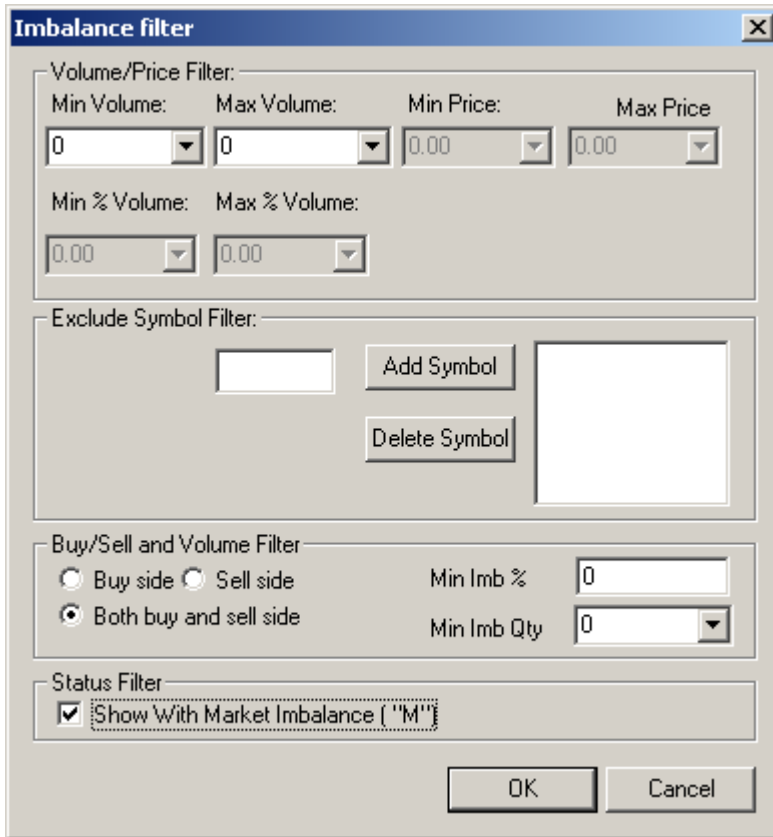
Version 8.5.3

Symbol	Volume	Status
KIM	969,600	M
NTT	6,000	M
CNO	168,700	M
ISH	700	M
LDK	83,000	M
TSL	47,700	M
TM	32,900	M
GF	11,800	M
DCS	7,100	M
ETE	5,300	M
GDL	800	M
PT	28,400	M
FIG	7,300	M
ICA	53,500	M
RVT	62,500	M
SSL	15,100	M

In version 8.5.2, the option “Show with market Imbalance (“M”)” check box is in the setting dialog as below snapshot.



And now in the version 8.5.3, this is moved to the filter dialog of imbalance as shown below.



In order to get the market imbalance, the user need to click on the check box “Show with market imbalance (“M”)” under Status Filter as shown in the above figure.

NOTE: The earlier version 8.5.2 was sending the notification to GB client and creating the imbalance files, but this feature is removed from the “Imbalance” window of current version 8.5.3.

This feature is moved to the newly added “Regulatory Imbalances” window in the version 8.5.3.

Regulatory Imbalance window (new feature)

This feature helps the user to access the Regulatory imbalances in the market time between 3:40 PM to 4:00 PM. There were 3 columns named Symbol, Volume and Status showing the respective data.

NOTE: this feature only works with new version of analytic server (v8.6.6).

Symbol: displays the stock security symbol.

Volume: displays the Imbalance volume.

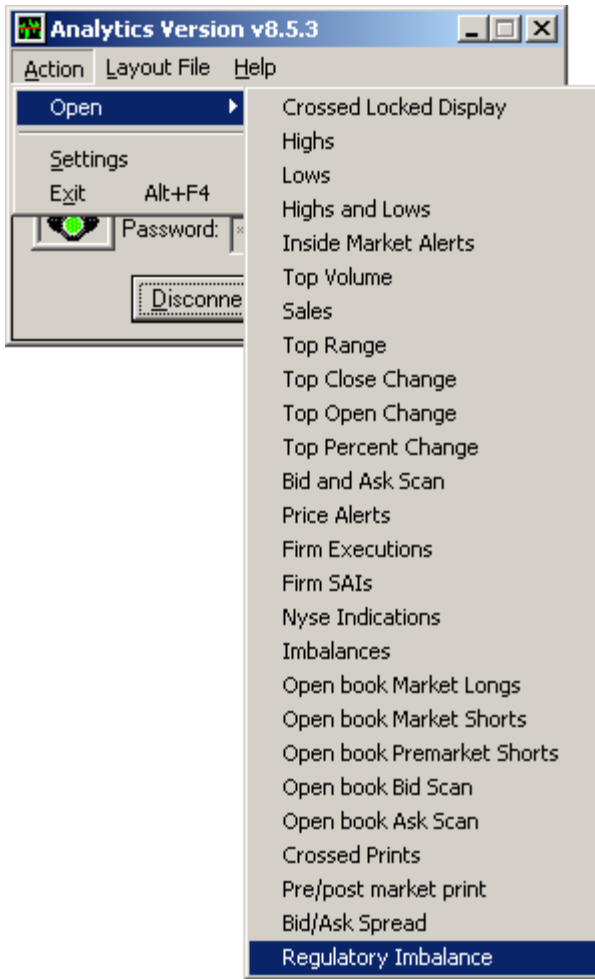
Status: displays the percentage (%) imbalance.

NOTE: Only regulatory imbalances are sent to Gray Box board view window after creating the files by the client.

Following are the steps how to use the added feature:

Open the Analytic Client main dialog (login dialog)

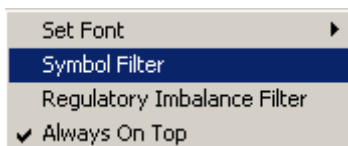
Go to Action -> Open -> Regulatory Imbalances as shown in figure.



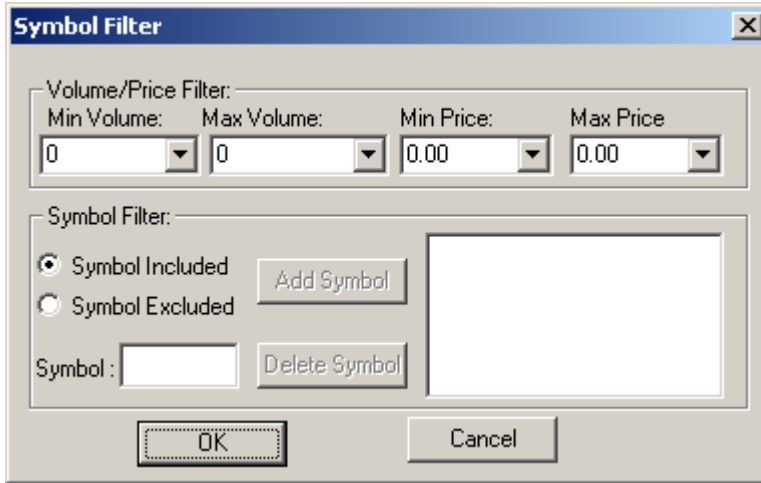
The following window will appear, with caption "Regulatory Imbalance". This window will get regulatory imbalance data at 3:40 PM market time.

Symbol	Volume	Status
FNM	23,000	9.77%
GGB	2,200	2.39%
MHP	63,700	45.53%
A	3,000	3.79%
MOT	27,200	15.71%
DYN	28,300	17.54%
BAC	294,200	29.14%
EQR	12,300	25.80%
JPM	23,700	4.26%
AMX	11,400	12.34%
GNW	17,000	8.54%
HPQ	23,500	9.05%
MDT	16,300	14.27%

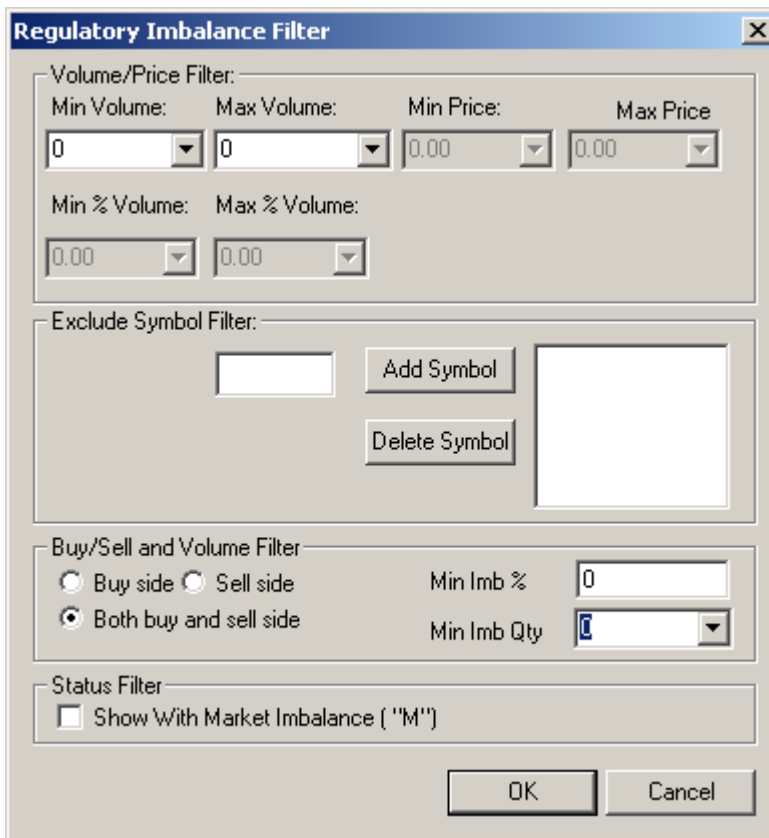
Right click on window will pop up the following menu



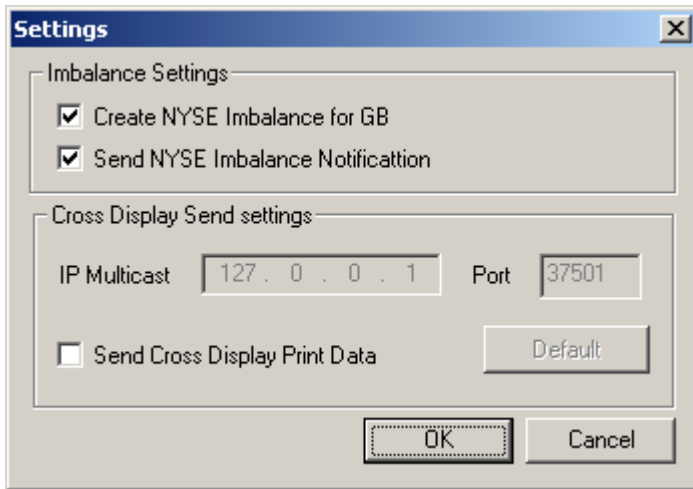
The Symbol Filter is as shown below



The Regulatory Imbalance Filter is as shown below.



NOTE: For sending the notification to GB Board view window and creating the imbalance files, the user needs to check the option under Imbalance Settings, provided in the setting dialog as shown below.



For further any help, contact with the IT help desk.